



# The New Zealand Deerstalkers Assoc. Inc.

---

**July Issue 2017:**



**“The Tines”  
Rotorua NZDA Branch Newsletter**



## Rotorua N.Z.D.A. Branch Calendar

Ring coordinators for more information.  
Phone numbers listed on inner back page.

### Calendar of the Club's regular monthly events:

Committee Meeting	Last Monday of each month
Range Shoots*	3rd Sunday of each month
Socials	4th Wednesday of each month
Party Hunts**	4th Weekend of each month

*\* Regular Club Hunting & Trophy Shoots. For extra range shoots and 300 metre shoots please refer to Yearly Range Calendar.*

*\*\*Some Party Hunts may be on different dates, see programme.*

### Our programme for this month:

**Party Hunts**                      **Please see page 15**

**Socials**                              **Part Hunt Kaimanawa Clements Road 21-23rd<sup>th</sup> July**

**Range Shoot**                      **Range itinerary for 2017 in this issue:  
Contact Malcolm Perry or Rod Andrews.**

**Cover Photo:** Ariel shot of the shooting range compliments of George Joseph Jnr

If you have a photograph that would be suitable for the cover please contact the Newsletter editor, John Moreland on 027 688 0317 or [editornzdarotorua@gmail.com](mailto:editornzdarotorua@gmail.com)

**Thanks to:** *Advocate Printing (248 Fenton Street, Rotorua (07 347 8822)) for printing our newsletter. The best address for quality and affordable copying and document solutions!*

**Advertising prices:** If you would like to advertise in this publication, costs are as follows:

Full page    \$150 (for 11 issues)

Half page    \$75 (for 11 issues)

Single issue adverts can be arranged if required.

**DISCLAIMER:** As the contents of this magazine come from various sources, the opinions or ideas expressed are not necessarily endorsed by this committee or by National Executive, nor may they conform to branch or national policy. The official publication of the NZDA is the 'NZ Hunting and Wildlife'

## Presidents Report:

Hi All

As you have been aware Denly has been working with the CNI Sika Foundation fly in trips into the bush, so I decided I would support one of these e trips along with Mr Self aka horse. As I am not the greatest sika hunter and as most people were telling me wrong time of the year I my expectations were not that great.

This did not increase when the pilot was flying over a narrow gutted small as stream, and then proceeded to drop down into it. Christ I thought no chance down there.

Well turns out to be pretty tight bush but there was shit load of sign about but they must have sussed me out

Well turns out I did manage to bag one all be not my finest shot but down is down.

Horse had no luck other than being squealed at, etc. by a few

So my point is get out and have ago, support the idea of heard management and the Sika Foundation.

So the news around the traps must be winter as not a lot to report , I along with Mark Slade will be off to the NZDA Annual Conference down south, so that should be interesting promise not to upset to many with my non PC language, that's why MR Slade will be there

I have been out to the range of late and it's good to get some positive responses on the work that's going down so hopefully we will get heaps out for the next upcoming working bees you think.

On that we will be closing the 200 range for a few today's soon to remove the 50m and associated fill behind the 100m, this to get the new 50m closer to being finished , the 300 will still be able to be used while we close the 200m range

However once the old 50m is gone , you will either have to go forward at the 100m berm to 50m off the berm or go and shoot 50m at the end of the 300m.

We will give some notice before this happens.

IF you have a major problem though, get out and help on the planned upcoming working bees then we can have all three ranges running simultaneously

Check the working bee dates on the web or in this issue.

Also what a turn out at the head measuring by the committee not, special thanks to Pete Carter Jnr for stepping up and measuring the heads that arrived

Cheers mate

Well I think I have said enough

Also make sure to check out the articles by John Moreland

Cheers Colin



An



ROTORUA – TAUPO  
[www.hamillsonline.co.nz](http://www.hamillsonline.co.nz)

## Hamills Rotorua

1271 Fenton Street, Rotorua

P: 07 348 3147

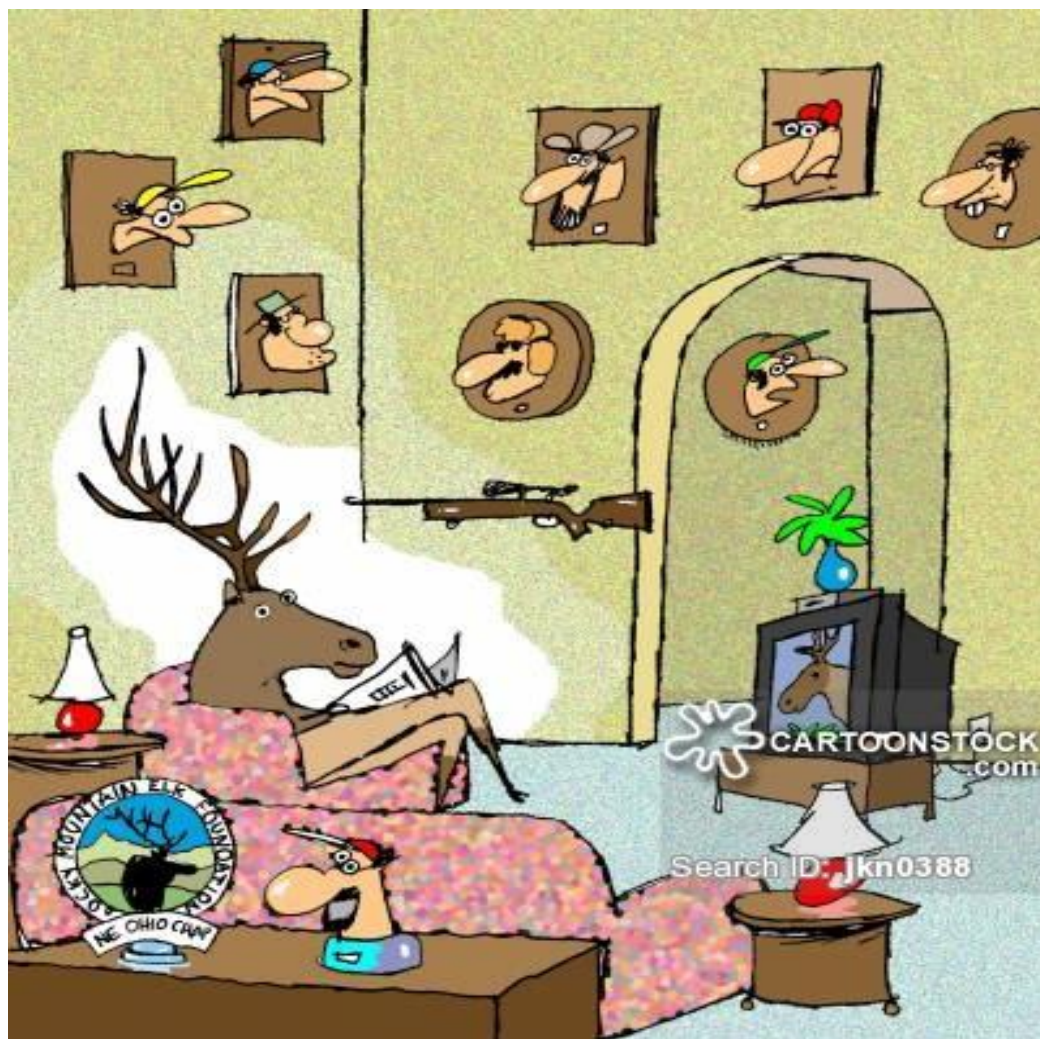
F: 07 348 3146

10% discount for NZDA Rotorua  
Members (*conditions apply*)



***Come in-store for awesome deals on your hunting and fishing goods!***

[www.hamillsonline.co.nz](http://www.hamillsonline.co.nz) Freephone 0800 270 222



# Loss of science quality in NZ is having dire consequences

Monday, 8 May 2017, 11:21 am

Article: [Dr Jo Pollard](#)

## Loss of science quality in New Zealand is having dire consequences

Dr Jo Pollard (BSc (Hons, PhD))

Back in the 1990s, in at least one institution, rigorous government science was alive and well.

At Invermay Agricultural Research Centre, “Lab” meetings were being held where the scientist (or trembling student) presented his or her proposed experiment: the background, hypotheses to be tested and methods. From these proposals were hammered out, with the critical input of all to be involved (particularly sharp, insightful comments were usual from some of the technical staff). Biometric approval was required to ensure the results from the research would be meaningful.

In those days any hint of a prejudicial *bias* seriously undermined a scientist’s credibility. His or her worth was measured by the number of publications in high quality, peer-reviewed journals.

Twenty-five years on, it seems a scientist’s selling ability matters most. Gaining funding and successfully delivering results that generate more funding is vital to career development. And since the NZ government controls the money (grants to universities, NGOs and its own departments) the government gets and selects what it wants.

Sadly, one of the things the NZ government wants and has been getting since the 1960s is widespread aerial poisoning with the broad spectrum poison 1080. The government has argued it needs to kill introduced mammals claimed to spread bovine tuberculosis (Tb) and threaten native wildlife, and widespread poisoning is the best way.

Respected scientists are expected to sit tight while the media, government departments and high ranking officials misuse data to suit pre-ordained agendas. An example is the repeated claim by the Parliamentary Commissioner for the Environment, Dr Jan Wright, that 1080 poison is “moderately humane”. The basis for the claim was a report commissioned by the National Animal Welfare Advisory Council (Beausoleil *et al.*, 2010). The report actually said that the word “humaneness” should be replaced with “animal welfare impact” because truly humane control methods are rare, and that 1080 had a “severe to extreme impact lasting for hours”, meaning that its effects on welfare were rated as “intermediate” relative to other poisons. Cyanide (which causes rapid loss of consciousness and death) was at one end of the scale and anticoagulants such as brodifacoum (which has a severe to extreme impact for days to weeks) at the other end.

In another example, respected ornithologist the late Professor Ian Jamieson & his student had to endure incorrect statements and gross extrapolation in the national media regarding the student’s study of two groups of robins near Dunedin. Their research findings were held up as an example of how harmless 1080 was and that it increased population growth (which it hadn’t).

New Zealand’s degraded science culture has spawned the rise of some disease-busting and biodiversity-conserving specialists whose claims go unchallenged, have a very strong following and who are supporting ever-increasing poisoning campaigns.

The most obvious victim currently is the kea, NZ’s own mountain parrot; a species known to be killed by 1080 poisoning operations since the 1960s and now on the very edge of extinction. Estimates of total kea

numbers as low as 1000 have been made since 1986. A current “wild stab” guestimate provided recently was 3000-7000 birds, and numbers have declined noticeably in recent years (Paul van Klink, speaking at Kea Konvention, Arthurs Pass, 2017).

Department of Conservation (DoC) monitoring has demonstrated that in every 1080 aerial poisoning operation, an average of 12% of kea die. This incredible loss to such a rare species is not justified by science, but it is *endorsed* by DoC’s scientist in charge of kea management, Mr Josh Kemp.

This bird on the brink of extinction deserves top quality science but Kemp’s plan for further, increased poisoning to save them falls far short. According to Kemp, increased 1080 poisoning is needed to kill stoats, which he says are a major cause of the kea’s demise. This contrasts sharply with Kemp’s and other scientists’ previous findings (from the 1960s, 1990s and last decade) that despite living in the company of stoats, kea were “relatively immune” to predation. Any predation impact was thought likely to have occurred long ago (stoats were introduced to NZ in the late 1800s).

It seems that Kemp is required to provide evidence that stoats (and even the largely vegetarian possum) *are* major predators of kea, and that 1080 is needed to kill them. Otherwise the government’s further, ever-increasing poisoning plans would clearly be irresponsible. In March 2014 Mr Kemp stated:

*“This year (2014-15) the DOC is gearing up to broadcast 1080 to poison pests over about 500,000 hectares of beech forest inhabited by kea under the Battle for our Birds campaign. These operations are approved on the basis that benefit derived to kea from stoat and possum control will outweigh the non target risk...”* (Kemp 2014, unpublished).

There are many serious flaws in the claim that 1080 is needed to kill stoats. The stoat has to eat a poisoned animal to die (the poison is delivered on cereal baits) and kill rates have been highly variable, e.g. *“The aerial 1080 at Mt Arthur did not reduce the stoat FTI...Stoat FTI subsequently increased”* (Kemp *et al.* 2014, unpublished). Stoats are also known to devastate native birds after poisoning in a response known as “prey switching”, after a steady diet of rats has suddenly been poisoned off.

Another major flaw is that aerial 1080 poisoning has been repeatedly observed to cause increases in firstly mice, then rats, in the poisoned areas. As Dr Andrea Byrom of Landcare Research bravely pointed out in 2013, such increases create excellent conditions for the proliferation of....stoats! This is what was observed at Okarito in 2011, where a 1080 operation was followed by large increases in mice, then rats, then a stoat plague in late 2012. Tellingly, in a draft 2016 paper Kemp held this poisoning operation up as the *“best example”* of aerial 1080 improving productivity of kea and preventing mortality from stoats! He had already pointed out, in 2015, that his Okarito study lacked replication, random assignment of the treatments, and observers blind to treatments.

Kemp has had to contort his data wildly, and make some extreme assumptions, to support the required claims. A graph he shows of alleged stoat numbers is not that at all, rather it uses an undefined measure “based largely on seed rain”. Never mind that seed rain does not always show a strong correlation with stoat numbers in the scientific literature. Another piece of “evidence” used is a single kea carcass that swabbed positive for stoat saliva – stoats are scavengers of dead animals, and will also prey on sick birds, so the saliva is not good evidence that stoats are a major predator of kea. Neither is the finding of a dead kea “cached” underground (also used as “evidence”) since rats cache dead animals too.

Kemp’s claims that only kea in human-inhabited areas die from eating 1080 pellets are simply untrue- in Kahurangi in 2014, a site chosen by Kemp for monitoring specifically *because* of its remoteness, 2/22 (9%) of monitored kea were killed by the poison.

Worryingly, Kemp’s kea predation studies rely on frequently visited nests, and there are plans for more monitoring. The scientific literature and bird codes of practice warn against any interference with nests as this is likely to attract predators and cause abandonment, and that any data from such nests must be treated



as biased. Kemp's nests that are monitored with still cameras experience multiple visits from stoats and other species.

The Strategic Plan for Kea Conservation (2015, 2017), a collaborative project between DoC and the Kea Conservation Trust, fails to achieve basic scientific standards. Research is cited without providing references, and bold, unreferenced claims are made (e.g. "the recent population decline exacerbated by introduced predators"). Important definitions (e.g. "predator") are lacking. The Background omits important issues e.g. starvation, previously identified as the major cause of death. There are no references to published research by Kemp despite his scientific involvement in kea management since the 1990s. There is no consideration of welfare impacts of prolonged deaths from poisoning or interfering with nests.

Positive, timely outcomes from the Strategic Plan seem unlikely. For instance the 2015 plan to "adequately" estimate the number of kea remaining is still some way from being realised, with various options for methods still being discussed in 2017. There were plans to use an "experienced scientist" to develop a working population model, in 2015. In 2017 there were still plans to "have a working population model developed and refined by an appropriate scientist."

Kemp's followers (kea lovers and DoC) are immediately and highly defensive of any criticism, to the point of leaping to their feet and shouting down any hint that his work and endorsement of more poisoning could be at all flawed (author's personal experience at Kea Konvention, Arthur's Pass 2017). The science-less nature of planning documents and publications, the misuse of scientific mana among followers, and followers' extreme reactions to any challenge are typical, in fact diagnostic, of *pseudoscience*.

Readers of this concluding paragraph will be in a minority, since few now have time to read about and consider scientific integrity. Hopefully the imminent demise of the kea will engage those few still thinking wisely to call urgently for *science* in conservation management.

For references please see <http://1080science.co.nz/scientific-reviews-of-1080/>

*Dr Jo Pollard (BSc (Hons), PhD) is an independent scientist, with particular interests in animal welfare, NZ's ecology, and scientific integrity.*

## Hon Todd McClay

MP FOR ROTORUA

*Putting Rotorua First*

### ROTORUA ELECTORATE OFFICE

**Address:** 1301 Amohau Street, Rotorua

**Postal Address:** P O Box 1099 Rotorua

**Office staff:** Tracey Curreen, Rosemary Newbrook

**Phone:** (07) 348 5871

**Fax:** (07) 349 6732

**Email:** [rotorua.mp@national.org.nz](mailto:rotorua.mp@national.org.nz)





"You can't go out dressed like that!  
People will think you're easy..."

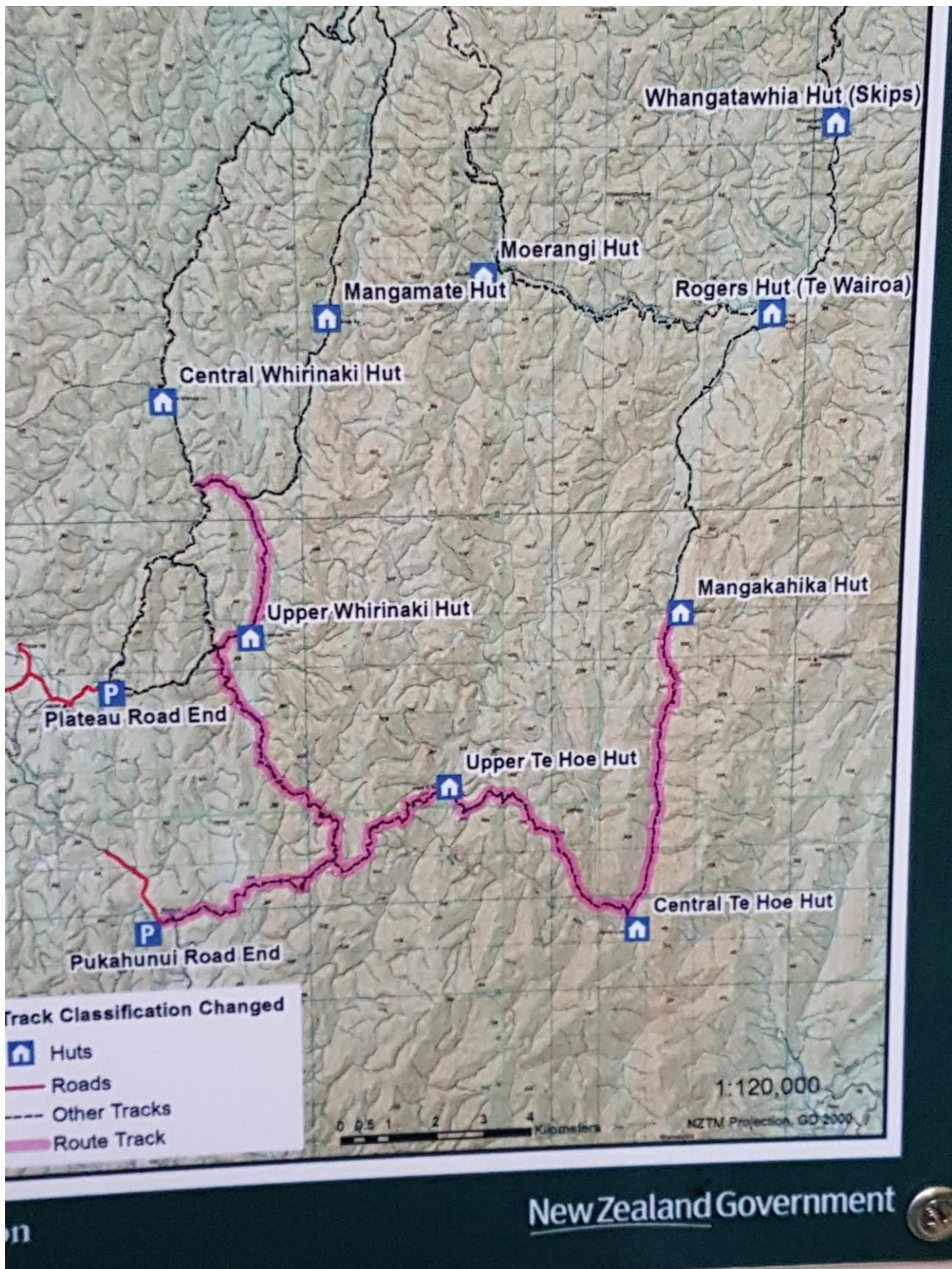


**YOU TAKE CARE OF THE HUNT  
WE'LL TAKE CARE OF THE CATCH**

07 3664 010 . 027 531 2296    [www.hannahomekill.co.nz](http://www.hannahomekill.co.nz)

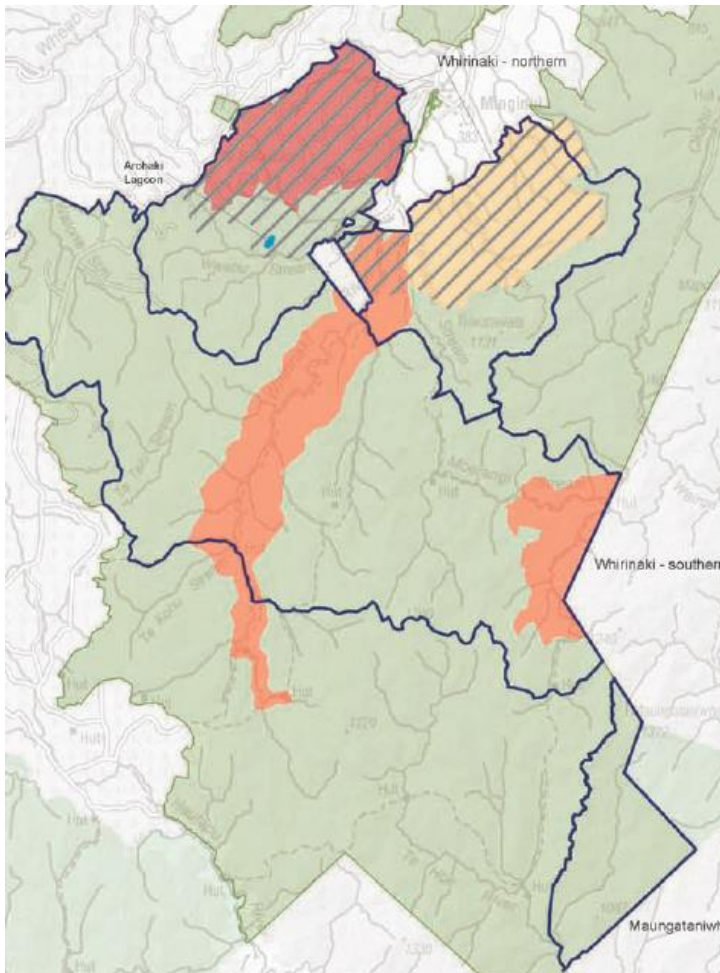


# LOSS OF THE WHIRINAKI





Whilst hunting in the Whirinaki over the road we came across this notice nailed on a post notifying people using the park that the tracks marked in Pink are effectively closed as a viable method of travel for 95% of the general public. We verified this notice attempting to travel from Mangakahia to central Te Anau. After the heavy snow falls of last winter a large amount of debris has come down over the track and DOC has decided that they will not re-open this area. This lines up with a paragraph in the recent Whirinaki Draft management plan of 2016 published by DOC, which states:



“The Park contains two ecosystem management units (refer Map 2) - Northern Whirinaki immediately south of Minginui; and Southern Whirinaki covering the central part of the Park, and part of a third - Maungataniwha. Of the two units, the Northern Whirinaki unit has been identified as a higher Departmental priority. It also contains a number of specially protected areas that have been gazetted as ecological areas (refer Appendix 1 and Map 1).” End quote

However there seems to be a conflict of interest when in the same document it states:

### Outcomes 2026

“The Park provides a wide range of eco-friendly recreational opportunities for people of all abilities, with a focus on families. The Department partners with others to expand these opportunities, to

promote and market them and increase use and enjoyment of the Park.

Management of the Park will aim to facilitate public use and enjoyment while protecting Park resources and values. It will also provide a foundation that fosters community *Part 4 – Te anga roopuwhakahaere / Management framework 34 Whirinaki Te Pua-a-Tāne Conservation Park Management Plan 2016* “end quote

So the question must be asked:

How is DOC going to provide opportunities for increased use and enjoyment when they have just shut half the park down to any visitors??

Editor

## **NZDA ROTORUA WEBSITE IS ONLINE:**

**CHECK OUT [WWW.NZDAROTORUA.ORG.NZ](http://WWW.NZDAROTORUA.ORG.NZ)**

---

---

### **Rotorua N.Z.D.A. Range Report June 2017.**

Saturday 10<sup>th</sup>, due to last weekend being long weekend program a week later, C.N.I.G.C. Service rifle club shoot.

Sunday 11<sup>th</sup>, 300M target shoot, the usual 3 or 4 turned up.

Sunday 18<sup>th</sup>, not a nice day but 3 of us turned up to test a couple of rifles and our skills on the deer targets.

A rather quiet month, but the good news is the new roof is on the 200M mound again, but on going out there yesterday (Thurs 22<sup>nd</sup>,) it was obvious the wind had blown the water dripping off the back of the roof right through the mound so next need the back wall closed in again, proposals of which have been discussed and an idea of how it will be done has been put forward.

#### **COMING EVENTS:**

##### **JULY;**

Saturday 1<sup>st</sup>, C.N.I.G.C. Service rifle club day.

Sunday 2<sup>nd</sup>, 300M target shoot.

Sunday 16<sup>th</sup>, .22 Rimfire metallic silhouette shoot.

##### **AUGUST:**

Saturday 5<sup>th</sup>, C.N.I.G.C. Service rifle club day.

Sunday 6<sup>th</sup>, 300M target shoot.

Sunday 20<sup>th</sup>, Deer silhouette / target shoot, 300, 200, 100 & 50M distances, 8 rounds of ammo per run through.

A request: Please if you are at the range and something is out of order or broken, please ring me or leave a message with the firearm folk at the outdoorsman who will certainly let me know. When I was out there on the 22<sup>nd</sup>, to do an induction, we went to put the flag up at the locked gate and were not able to do so as it was all in a heap on the ground, rope broken. If I had been notified I could have been prepared to repair it then, luckily was due to go out 2 days later, and will fix it. It does seem the setup has a particular problem that caused the rope to wear excessively which will be investigated.

Also there are still people using the shorter distances on the 300M range incorrectly, if you wish to shoot at 100 or 200M on this range you must put your target at the bottom of the range and shoot off the open grass mounds of the particular distance, most people do get it right but there are one or two who do not. Please folks do the right thing as any mishaps could lose us a very valuable asset.

Time to reload,

Malcolm P,

027 625 9608.





**Te Ureweras & Whirinaki**



**Book Now!!**

**Red Rusa Pigs**

**Ex Galatea Airfield**

**0800 435 444**

**For Prices [www.helihire.co.nz](http://www.helihire.co.nz)**

**[info@helihire.co.nz](mailto:info@helihire.co.nz)**



**WINTERTIME**



**Rotorua Hunting and Fishing,**  
Trade Central, 1530 Amohau Street, Rotorua 3010, Ph 07 349 6303.



Your hosts Steven and Dana welcome you to an oasis in the centre of town, next to the Meat Shoppe on Tutanekai St. 07/282 2090

A Hunter's Paradise, from the décor to the menu, everything is geared to make even the most fearless hunter feel at home. Signature dishes are the Mai Mai Duck Sandwich, the Butcher's Best Venison Burger and the Tikka's Catch Wild Pork Sliders.

Open Six days, 7am-3:30pm M-F, and 8am- 3pm Sat.

Follow Us on Facebook or Instagram at Scope Rotorua.  
Scope1296 Tutanekai St. [scoperotorua@gmail.com](mailto:scoperotorua@gmail.com)







"Cutting fourth-quarter operating costs by eating venison was brilliant. Of course, now we've got a bigger problem."



# PRIME HOMEKILLS

For all of your Homekill and Butchery needs.

## Sausages, Paddies, Salami ...

To get the best from your catch, give us a call.

*Competitive prices.*

Phone Jason Riedinger - 027 617 8237 or (07) 332 5949

49a Depot Street, Rotorua email - [primehomekills@hotmail.co.nz](mailto:primehomekills@hotmail.co.nz)





# PARTY HUNT:

- Staying at Sika Lodge Clements Road.
- Friday 21st Saturday 22nd and Sunday 23rd July 2017.
- Cost \$30.00 per night P/P.
- Bring sleeping bag and food etc. All cups, pots, pans plates are all there.
- Log fire in the lounge with TV.
- Please note payment is by **CASH ONLY no ETPOS.**

Contact Denley for any further details. Ph 0278974368.

Article published by NZ Herald last week

## Horror at children drowning baby possums at Drury school event

Young possum joeys were taken from their mother's pouch and drowned in a bucket of water during an annual fundraising hunt for a South Auckland school.

Hundreds of adult possums were killed during the event raising money for Drury School last weekend, with a witness telling the *Herald on Sunday* at least one teenaged girl - not a student of the school - was allegedly involved in the drowning of the baby possums.

The Ministry for Primary Industries confirmed it was investigating the incident and the school has vowed it is changing policies for next year's hunt - which is organised by the parent-run organisation Friends of Drury School - after discussions last week with the SPCA.

Last Sunday's weigh-in - where the drownings occurred - came after several days of possum hunting, with hunters bringing the dead adult marsupials in for weighing, before they are sold to a fur buyer as part of a fundraising initiative.

The SPCA had since been in touch with the school to explain the method of killing the joeys was not considered humane, Logan said.

"The school has learnt from this and we will be working with the SPCA to ensure that all animal welfare requirements are met in future so that the focus is returned to the commendable intent of the fundraising itself."

An MPI spokeswoman confirmed it had received a complaint and were making inquiries to determine if an offence had been committed.

Drowning animals is illegal under the Animal Welfare Act and is punishable by a fine up to \$75,000 or a maximum three years' imprisonment.

"MPI will also visit the school to ensure the school or relevant committee is aware of their responsibilities for future events," the spokeswoman said.

"There is guidance available for humanely euthanising young possums and this will be shared with the school.

"MPI is very aware of the need for animal welfare education at schools and has developed resources to support teachers."

The complaint to MPI was made by Lynley Tulloch - an animal rights activist - who attended the event after telling organisers she was an environmentalist from the Waikato and was writing a children's book.

She told the *Herald on Sunday* she witnessed a teenage girl pulling live joeys out of possum pouches and dropping them into a large bucket.

She was told by those present the girl was drowning the joeys.

Tulloch said the drowning of the joeys was "absolutely appalling".

She added she was "absolutely sickened" by what she saw.

SAFE chief executive Jasmijn de Boo said drowning was an unacceptable way to kill an animal.

Drowning newborn animals is considered particularly cruel because they have an automatic reflex to hold their breaths, meaning it takes longer for them to lose consciousness than if they inhaled water.

"It's not quick and it's causing severe distress."

Schools teaching children to kill animals desensitised them to violence, she said.

Possums were cruelly treated in New Zealand, de Boo said.

"I know they cause damage but they're still sentient beings with feelings."

As well as complaining to MPI, Tulloch has also started a [petition](#) to ban school possum hunts.

The petition has so far gathered almost 3000 signatures. (end article)

### Comment:

I suppose the question to ask is how come DOC doesn't get punished by the SPCA for inhumane killing of possums?

The SPCA is the only charity with the legal powers to help animals in need, and bring animal offenders to justice. Our Inspectors are authorised under the [Animal Welfare Act 1999](#) to protect all animals from abuse, neglect and abandonment.

Maybe something to do with them both being Govt Funded Departments?

Other supporters of the SPCA include Bean Supreme. A company with an agenda to make all of us vegetarians

Off their website: “ Bean Supreme means great tasting food that’s good.

We care about how the food we eat fits into the world around us. We envisage a future where the majority not the minority will eat a meat free meal and not feel like they have missed out on anything.” End quote

Editor.





# Outdoorsman Headquarters

NEW ZEALAND'S GREATEST OUTDOOR OUTFITTERS

New Store opening  
3rd September



Specialist



Headquarters

NEW ZEALAND'S GREATEST  
OUTDOOR OUTFITTERS

6 Tarawera Rd

Rotorua

Ph 07 345 9333

OPEN 7 DAYS

[www.outdoorsman.co.nz](http://www.outdoorsman.co.nz)



Outdoorsman  
Headquarters

NEW ZEALAND'S  
GREATEST  
OUTDOOR  
OUTFITTERS



6 Tarawera Road, Rotorua. Phone 07 345 9333

<http://www.outdoorsman.co.nz>

## YESTERYEAR PHOTOS

Care of: [nzdeercullers.org.nz](http://nzdeercullers.org.nz)



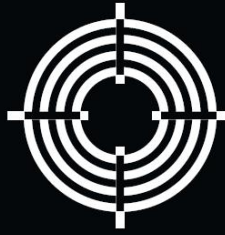
Carkeek Hut 1965. Photo taken by Noel Frazer, NZFS field officer. Two parties of cullers ended up at Carkeek, along with field officers Athol Geddes and Noel Frazer. L to R: Athol Geddes, Colin McIntyre, Ross Locker (trainee) Russell Hulme, Dick Hetherington, Aubrey Hohua, Tony Newton (trainee), Jim Taylor.

**EACH DAY, THOUSANDS  
OF INNOCENT PLANTS ARE  
KILLED BY VEGETARIANS.**



**HELP END THE VIOLENCE.  
EAT VENISON**





# STEYR MANNLICHER

## PRO HUNTER STAINLESS

CALIBRES AVAILABLE: 223REM |  
243WIN | 308WIN | 7mm - 08  
| 30-06SPRG | RRP \$1,799.00



# HUNTING RIFLES

ENGINEERED AND MANUFACTURED IN AUSTRIA  
for more information on these & other STEYR rifles visit [kilwell.co.nz](http://kilwell.co.nz)





# interislander

NGĀ WAKA · NEW ZEALAND'S FERRIES

## RATES QUOTED FOR NZ Deerstalkers Association

Group Booking Reference: **FA5474**

The below rates are based on prices to date, inclusive of GST and subject to availability.

<b>Fares:</b>	<b>Peak Each Way</b>
Adult	\$52.00
Child	\$25.00
Motorcycle	\$49.00
Campervan/Motorhome up to 5.5mt	\$170.00
Additional half metre	\$42.00
Car/Ute/Van/4WD/trailer up to 5.5mt	\$137.00 each
Additional half Metre	\$22.00
Premium Lounge (Kaitaki & Aratere)	\$45.00 18yrs plus

**Peak Dates:**

01-28 February 17  
13-18 April 17

<b>Fares:</b>	<b>Off Peak Each Way</b>
Adult	\$45.00
Child	\$25.00
Motorcycle	\$39.00
Campervan/Motorhome up to 5.5mt	\$142.00
Additional half metre	\$37.00
Car/Ute/Van/4WD/trailer up to 5.5mt	\$124.00 each
Additional half Metre	\$19.00
Premium Lounge (Kaitaki & Aratere)	\$45.00 18yrs plus

**Off Peak Dates:**

01 March – 12 April 17  
19 April – 18 December 17

**Group Booking conditions and instructions for members are:**

- Reservations can be made direct with Interislander online at <http://www.interislander.co.nz/Booking/Group-Bookings.aspx> by entering FA5474 into the group discount code box.
- Space is subject to availability at the time of the booking request.
- Bookings are 90% refundable if cancelled up to 1 hour before departure.
- Date and time changes allowed up to 1 hour before departure without penalty, subject to availability.
- **NZDA membership card to be shown at check-in or full retail fare will be charged.**
- Fares subject to change with notification.
- If booking from outside NZ you will need to request your booking be made via email.
- Rates valid for travel 01 February through to 18 December 17

## Club Contacts

Postal address: PO Box 857, Rotorua  
Email: [nzdarotorua@gmail.com](mailto:nzdarotorua@gmail.com) web: [www.nzdarotorua.org.nz](http://www.nzdarotorua.org.nz)

Patron Des Jenkins  
Honorary Solicitor Barry Rodgers  
Life Members Des Jenkins  
Rod Houghton Ph 332 2577  
Malcolm Perry Ph 348 4473

Owen Rumble  
Gary Winslade  
Dennis Price Ph 347 2946

Honorary Member Ross Burton  
Investment Trustees Cliff Graham  
Rod Houghton  
Ralph Price

## Branch Executive

President Colin Petersen Ph 343 9481  
Vice President Dennis Price Ph 347 2946  
Treasurer Mark Slade Ph 349 5360/027 498 8911  
Secretary Elvis Bowring Ph 350 3230/021 066 7868  
Hunts Convenor Murray Robson Ph 345 5160  
Neil Fawcett Ph 350 2233

## Committee Members

Range Malcolm Perry Ph 348 4473  
Rob Andrews Ph 985 4133  
Dennis Price Ph 347 2946  
Socials Scott Russell Ph 343 9383  
Search and Rescue Cliff Graham Ph 362 8883  
Webmaster Ralph Price Ph 357 2786  
Tines Editor John Moreland Ph 027 6880317  
Lance Price Ph 333 1625  
Geoff Moree Ph 348 8632  
Graham Allen Ph 332 2037  
Roger Wootton Ph 021 232 1433  
Denley Tarplett  
Paul Midgley Ph 021 728 550  
Malcolm Midgley Ph 021 856 660  
Library Peter Graham Ph 333 1838

## Range Keys

Any person who wishes to have a range gate key for the private use of our range must be a CURRENT FINANCIAL MEMBER of the Branch and must obtain a key from Hunting and Fishing, Hamills, Outdoorsman HQ or Serious Shooters. You must have completed the range induction protocol. Your membership card must be produced at the time of key purchase. Keys may not be lent or passed on to other persons, whether they are members or not. Non-Members can only enter the Range if accompanied by a current Financial Member. Any use of the range by non-members requires prior approval of the committee.

## Membership Costs (Rotorua Branch)

Senior = \$110 (full benefits at local and national branch level)

Associate = \$70 (Unable to vote or enter national competitions. Does not receive H&W)

Junior = \$25 (Must be less than 18 years of age as at March 1st 2011. Full benefits apart from voting rights.)

Student = \$40 (Must be attending a tertiary institute or undergoing an apprenticeship. Proof must be provided.)

Superannuant = \$50 (Over 65 as at March 1st 2011. Full benefits)

Family = \$5 (Children or grandchildren), \$10 partner or spouse.

Sender:

Rotorua Branch NZDA  
PO Box 857  
ROTORUA

